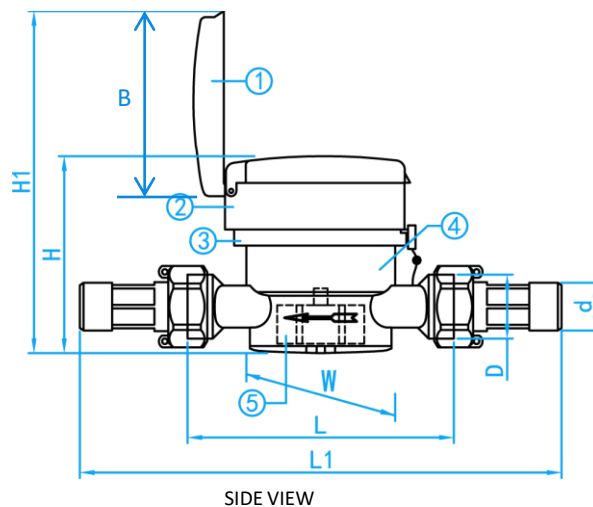
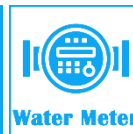


EPOXY-COATED BRASS SINGLE-JET DRY DIAL COLD WATER METER (R80)

COMPLY WITH ISO 4064: 2014



1. Colour ---Grey.
2. Information on the lid—
 - (a) Water meter usage monitoring purpose
 - (b) Date of installation and
 - (c) Remark.

COMPONENT PARTS

ITEM	PARTS	MATERIAL
1	Lid	Plastic
2	Sealed Register	ABS
3	Sealing Ring	Brass/Plastic
4	Body	Epoxy-coated Brass
5	Single Jet Impeller	Plastic

STANDARD SPECIFICATIONS

Water Temperature	0 - 30°C
Operating Pressure	≤ 1.6Mpa
Accuracy Class / Performance ratio (R)	R80

FLOW RATE SPECIFICATIONS

SKU	SIZE (mm)	R [Q ₃ / Q ₁]		Q ₁ Minimum flow rate [l / h]	Q ₂ Transitional flow rate [l / h]	Q ₃ Nominal flow rate [m ³ / h]	Q ₄ Maximum flow rate [m ³ / h]
		Horizontal	Vertical				
WMN013D	13	R80	NA	31.25	50	2.500	3.125
WMN020	20			50.00	80	4.000	5.000
WMN025	25			78.75	126	6.300	7.875
WMN035	32			125.00	200	10.000	12.500
WMN042	40			200.00	320	16.000	20.000

DIMENSIONS

SKU	L1(mm)	L(mm)	D(inch)	d(inch)	H(mm)	H1(mm)	W(mm)	B(mm)	WEIGHT (kg)	PCS/CTN
WMN013D	224	110	G ¾"	R ½"	84.5	145.5	81.5	70	0.680	20
WMN020	234	130	G 1"	R ¾"	84.5	145.5	81.5	70	0.815	20
WMN025	380	160	G 1-1/4"	R1"	106.0	167.0	84.0	70	1.915	10
WMN035	280	160	G 1-1/2"	R1-1/4"	106.0	167.0	84.0	70	1.875	5
WMN042	331	200	G 2"	R 1-1/2"	126.0	184.0	110.0	70	3.230	3

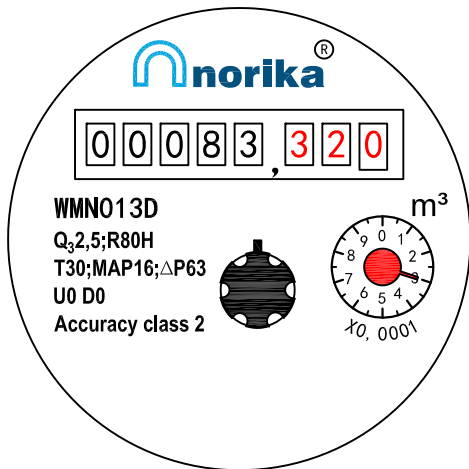
*1] Ensure water meter is installed in the correct water flow direction.

2] Always ensure to select the correct size and spec for the meter.

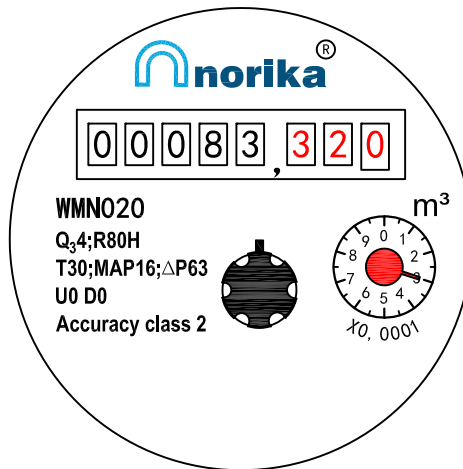
3] All of the above water meters are only suitable to be installed in the horizontal position. Failing to comply will result in damaging the meter and warranty will be voided.

Water Meter Reading 水表读数

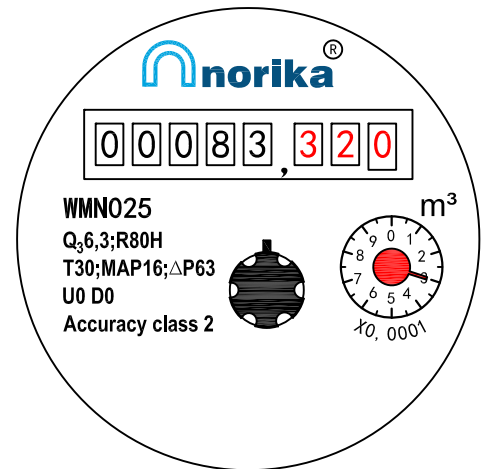
WMN013D



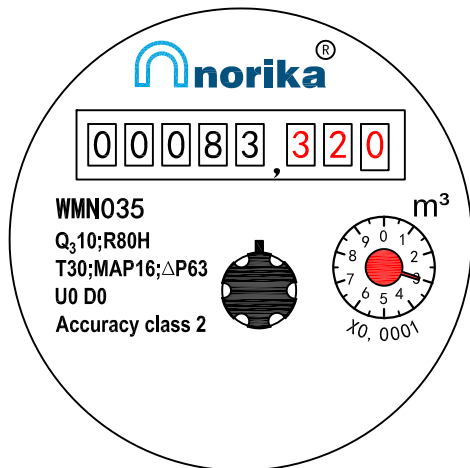
WMN020



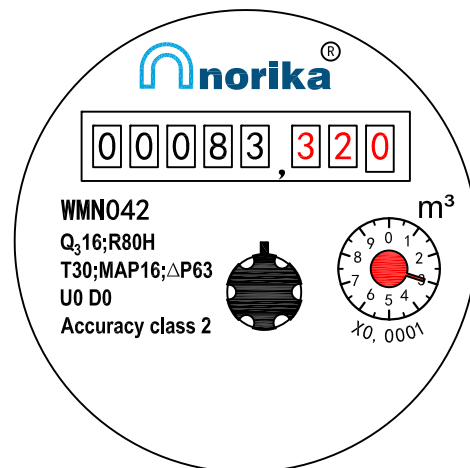
WMN025



WMN035



WMN042



Water meter's Measuring unit is the cubic meter .(m³)

Conversion formula is: 1 m³ = 1,000 Litres

For example, Pic on the left, read as:

83.3203m³ OR 83,320.3 Litres

水表的计量单位为：立方米 (m³)

换算公式为:1立方米=1000公升,

即：1m³=1,000 Litres

以图为例：

水表的读数为 83.3203m³

换算成公升为 83,320.3 Litres